



# IVX S-Class Installer worksheets

**Note:** These Installer worksheets are for use with **any** IVX S-Class system.

**Important:** Before programming, make sure you initialize the system!

## Function 1: System parameters

### F11 — Initialization

#### F12 — Installer password

Range: 2–8 digits. Default: 789.

#### F13 — Administrator password

Range: 2–8 digits. Default: 456.


### F14 — Set time/date

*F141: Set time and date*

*F142: Automatic time settings*

**Synchronize with Caller ID**

Default: Enabled.

**Adjust for Daylight Savings Time**

Default: Enabled.


### F15 — System timing parameters

**F151: Flash hook duration**

Range: 0.2–2.0 sec. Default: 1.5 sec.

**F152: Transfer forward timer**

Range: 1–9 rings. Default: 3.

**F153: Hold recall timer**

Range: 5–960. Default: 60.


## F16 — System feature parameters

**F161: Recording alert tone**

Default: Disabled.

**F162: Connect tone**

Default: Enabled.

**F163: Feature set activation<sup>1</sup>**

**1. Group listen**

Default: Disabled.

**2. Privacy release**

Default: Disabled.



---

## F17 — System speed-dial

(Use the worksheet on the following page.)

---

## F18 — Serial port baud rate

**2: Serial baud rate**

Options: 300, 1200, 2400, 4800, 9600, 19200, 38400. Default: 38400.

**3: SMDR format**

Options: Standard or CSV. Default: Standard.


---

<sup>1</sup> Generation II only.

### F17 — System speed dial

<b>Loc.</b>	<b>Name</b>	<b>Number</b>
600		
601		
602		
603		
604		
605		
606		
607		
608		
609		
610		
611		
612		
613		
614		
615		
616		
617		
618		
619		
620		
621		
622		
623		
624		
625		

(Use a blank sheet for additional speed dial numbers 626–699.)

## Function 2: CO lines

### F21 — CO line programming

Options: Analog CO line

Default answer ring assignment for CO lines: ID1

Mode: \_\_\_\_\_ (day, night).

	<i>Circuit</i>	<i>CO</i>	<i>Name</i>	<i>Line group</i>	<i>Ring 1</i>	<i>Ring 3</i>	<i>Ring 5</i>	<i>Ring 9</i>
<b>482 Config. Main Board:</b>	1							
	2							
	3							
	4							
<b>Slot # _____ 482 Card:</b>	1							
	2							
	3							
	4							
<b>Slot # _____ 482 Card:</b>	1							
	2							
	3							
	4							
<b>Slot # _____<sup>1</sup> 482 Card:</b>	1							
	2							
	3							
	4							

<sup>1</sup> Generation II only.

## F22 — Translation Table Programming

**F221: Centrex/ PBX access codes**

**Line group 9**

Default: 0.

**Line group 8**

Default: 0.

**Line group 7**

Default: 0.


### **F222: Toll restriction exception tables**

**Allow** numbers (maximum, 100 entries):

---

---

---

---

---

**Deny** numbers (maximum, 100 entries):

---

---

---

---

---

## F23 — CO line parameters

**F231: Line receive volume**

Range: 0–12. Default: 10.

**F232: Line disconnect**

Range: 1-255. Default: 6.


## F24 — Caller ID

Options: Enabled, disabled. Default: Disabled.

Local – 7:

---

---

---

---

---

Local – 10:

---

---

---

---

---

## Function 3: Extension programming

### F31 — Extension definition and routing

*For Digital Feature Phones*

		Ext.	Type	Name	CO line groups	CF day	CF night	Pg zone	Ext.
		0		Operator					
482 Config. Main Board	1								
	2								
	3								
	4								
	5								
	6								
	7								
	8								
Analog	9								
	10								
482 Card	1								
	2								
	3								
	4								
	5								
	6								
	7								
	8								
Analog	9								
	10								

Make copies if you have an additional 482 port card.

### F32 – Extension feature authorization

	Ext.	Name	Rec.	Toll allow	Sys. speed-dial	External frwdng.	Fwd. toll	Trunk-to-trunk xfer	Unified messaging
	Default		Y*	Y	Y	N	N	N	N
1									
2									
3									
4									
5									
6									
7									
8									
9									
10									
11									
12									
13									
14									
15									
16									
17									
18									
19									
20									
21									
22									
23									
24									
25									
26									
27									
28									
29									
30									
31									
32									
33									
34									
35									
36									
37									
38									
39									
40									

Make copies for additional extensions.

\* Does not apply to 12-Key Feature Phones or analog extensions.



### F33 – Department programming

Dept. types: In Order, All, UCD.

Dept. ext.	Name	Type	CF day	CF night
290				
Ext. List:				
291				
Ext. List:				
292				
Ext. List:				
293				
Ext. List:				
294				
Ext. List:				
295				
Ext. List:				
296				
Ext. List:				
297				
Ext. List:				
298				
Ext. List:				
299				

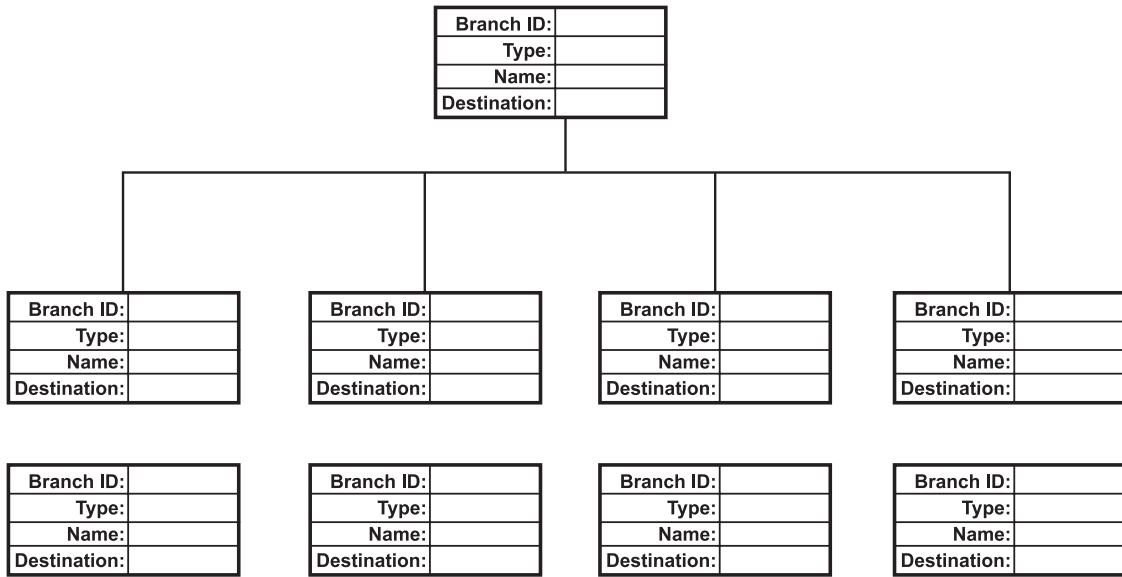
### F35 – Extension button mapping

See "Function 35: Extension button mapping" in *IVX S-Class Installation Manual* for button default based on the system configuration.

# Function 4: Auto attendant programming

## F41 – Auto attendant branch programming

Day   
 Night



## F43 — Automatic day/night tables

**Note:** Program using 24-hour format.

	MON		TUE		WED		THU		FRI		SAT		SUN	
	Start time	Mode	Start time	Mode	Start time	Mode	Start time	Mode	Start time	Mode	Start time	Mode	Start time	Mode
1														
2														
3														
4														
5														
6														





## F55 — Message notification

### F551: Station delivery options

Mailbox		Number	Delay	Attempts	Interval	Quiet on	Quiet off
Range	Phone	Up to 24 digits	0–500	0–99	10–1,440	None	None
Range	Pager	Up to 24 digits	0–500	0–99	10–1,440		
Default	Phone	None	0	3	30	None	None
Default	Pager	None	0	3	30		
1	Phone						
	Pager						
2	Phone						
	Pager						
3	Phone						
	Pager						
4	Phone						
	Pager						
5	Phone						
	Pager						
6	Phone						
	Pager						
7	Phone						
	Pager						
8	Phone						
	Pager						
9	Phone						
	Pager						
10	Phone						
	Pager						
11	Phone						
	Pager						
12	Phone						
	Pager						

Make copies for additional mailboxes.

### F552: Delivery/paging parameters

**CO line access**

Range: 9, 8, 7. Default: 9.

**Maximum lines**

Range: 1–19. Default: 1.

**Pager dialing pause**

Range: 0–20. Default: 6.


## F56 — Cascade paging mailboxes

Attempts — Range: 0–99. Default: 0.

Paging interval — Range: 0 (page only once)–1,440. Default: 0.

Mailbox	Option 1			Option 2		
	1st number	Attempts	2nd number	Attempts	3rd number	Paging interval
520						
521						
522						
523						
524						
525						
526						
527						
528						
529						

## Function 6: Recordings

### F61 — Re-recordable prompts

Prompt	Type	Default	Re-recorded
530	Busy prompt	<input type="checkbox"/>	<input type="checkbox"/>
531	No answer	<input type="checkbox"/>	<input type="checkbox"/>
532	Hold	<input type="checkbox"/>	<input type="checkbox"/>
534	Q/Z	<input type="checkbox"/>	<input type="checkbox"/>
535	No names matched	<input type="checkbox"/>	<input type="checkbox"/>
537	End of recording	<input type="checkbox"/>	<input type="checkbox"/>
540	Holiday greeting	<input type="checkbox"/>	<input type="checkbox"/>

### F62 — Record directory names

(Use the worksheet on the following page.)

**Prompt for first name/last name**

Options: "Select by first name" (default); "Select by last name."

### F63 — Message-on hold-programming

**F631: MOH source**

Range: 590–598. Default: 592

**F632: MOH recording**

(See *Installation Manual* for instructions.)

**F633: MOH volume**

Range: 1–12. Default: 6





## Function 8: Programming for *VIP*

### F824: Network Services Processor (NSP)

<b>NSP private IP address</b> Range: 1.0.0.1 – 254.254.254.254.	_____ . _____ . _____ . _____
<b>NSP subnet mask</b> Range: 0.0.0.0 – 255.255.255.252.	_____ . _____ . _____ . _____
<b>NSP gateway</b> Range: 1.0.0.1 – 254.254.254.254.	_____ . _____ . _____ . _____
<b>NSP public IP address</b> Range: 1.0.0.1 – 254.254.254.254.	_____ . _____ . _____ . _____
<b>Unified messaging e-mail server <sup>1</sup></b> Range: 1.0.0.1 – 254.254.254.254.	_____ . _____ . _____ . _____
<b>Unified messaging e-mail address <sup>1</sup></b>	@

<sup>1</sup> This will appear only if *VIP* unified messaging has been installed on the system.